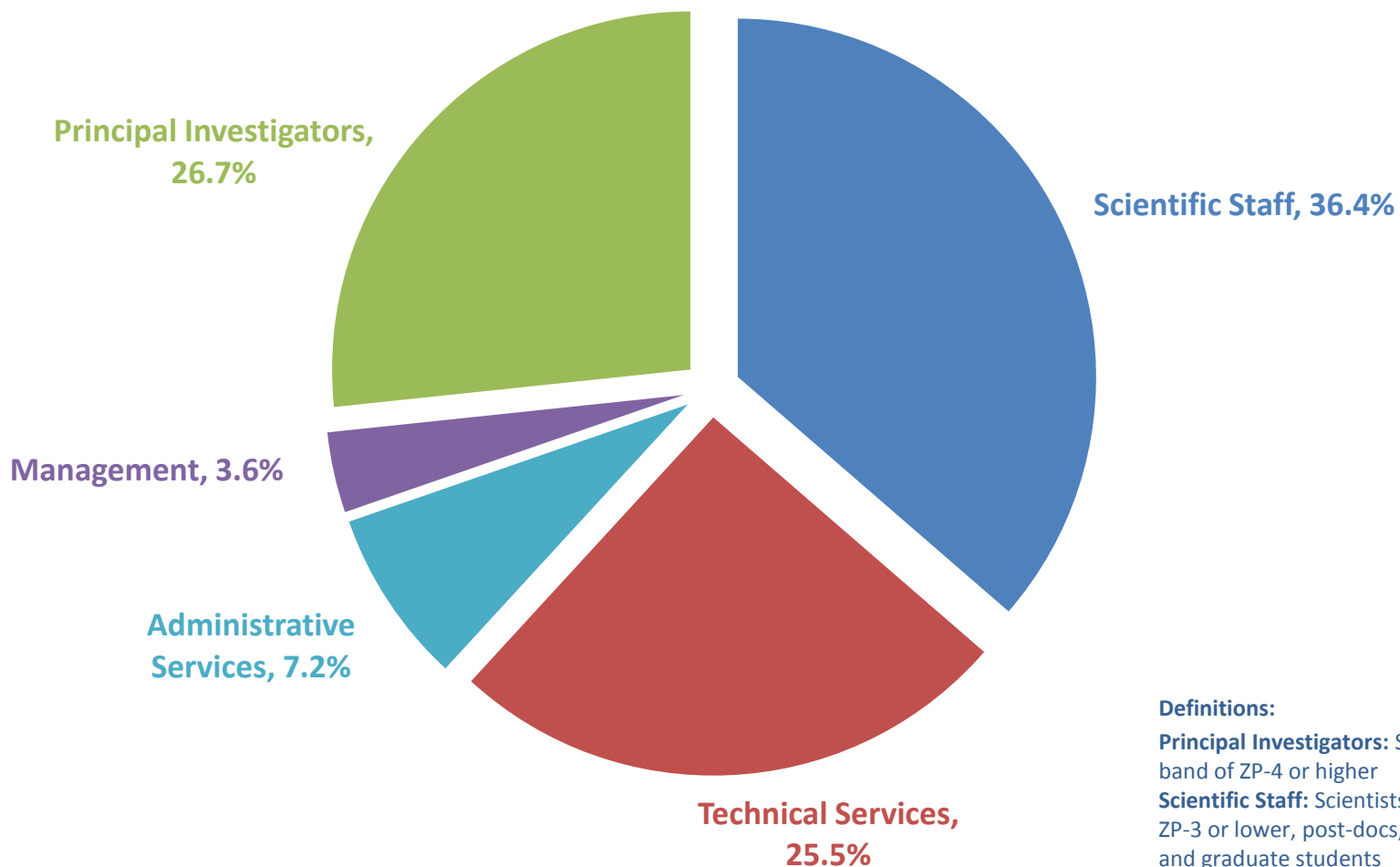


Geophysical Fluid Dynamics Laboratory 2013 Workforce Distribution

**TOTAL GFDL, CICS, UCAR,
and Other Staff: 165**



Definitions:

Principal Investigators: Scientists at pay band of ZP-4 or higher

Scientific Staff: Scientists at pay band of ZP-3 or lower, post-docs, visiting scientists, and graduate students

Geophysical Fluid Dynamics Laboratory 2013 Demographic Data

Ethnicity

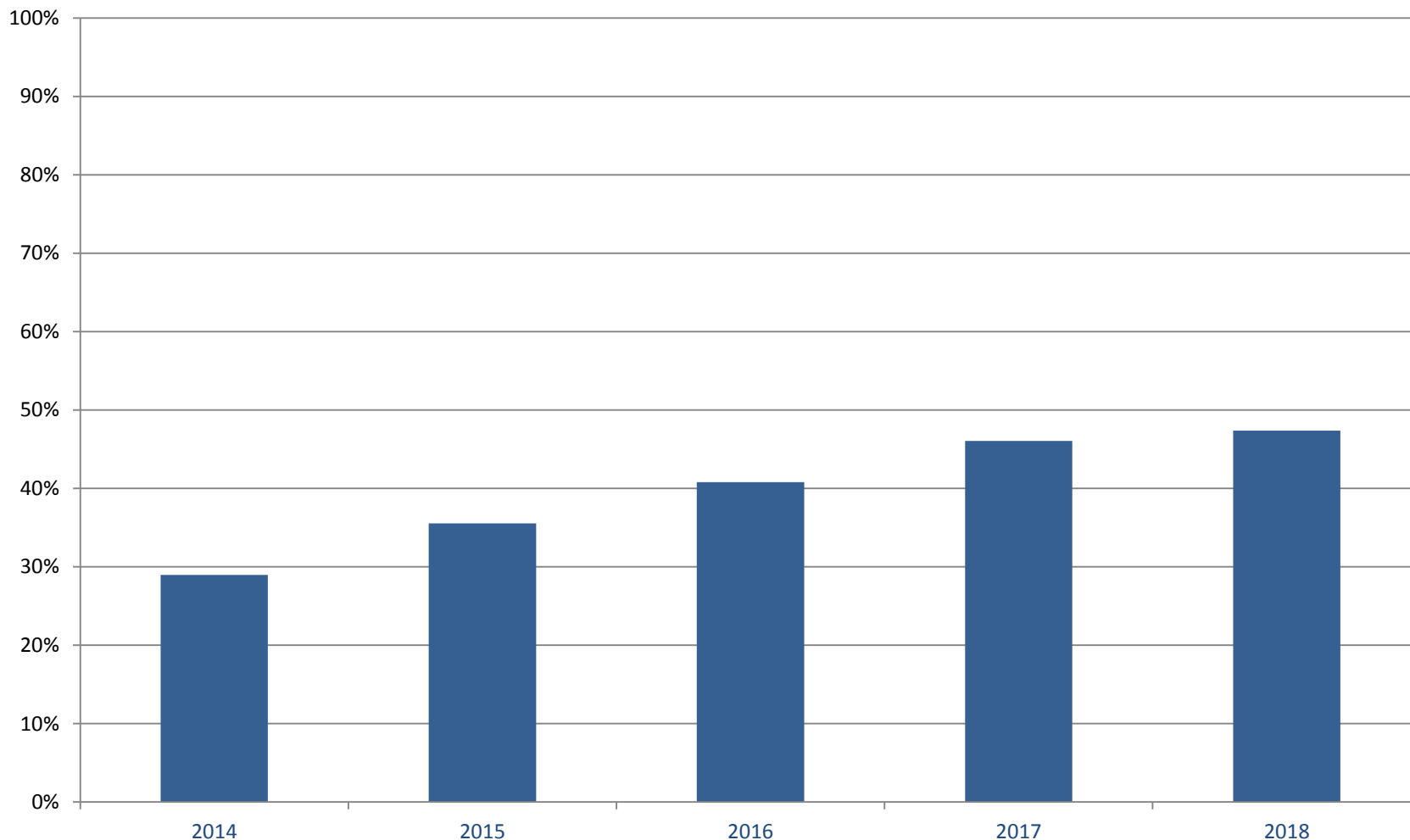
	Federal Employee Hires Last 5 Years	Federal Employee Total	CICS & UCAR	Contractors & OPS-Interns	Total
Native American	0	2	0	0	2
Asian	1	6	21	4	31
African American	0	3	0	3	6
Caucasian	9	66	28	28	122
Latino	0	1	1	0	2
Other	0	0	0	2	2
Total	10	78	50	37	165

Gender

	Federal Employee Hires Last 5 Years	Federal Employee Total	CICS & UCAR	Contractors & Fed-Interns	Total
Male	8	63	29	33	125
Female	2	15	21	4	40
Total	10	78	50	37	165

Geophysical Fluid Dynamics Laboratory Federal Retirement Eligibility

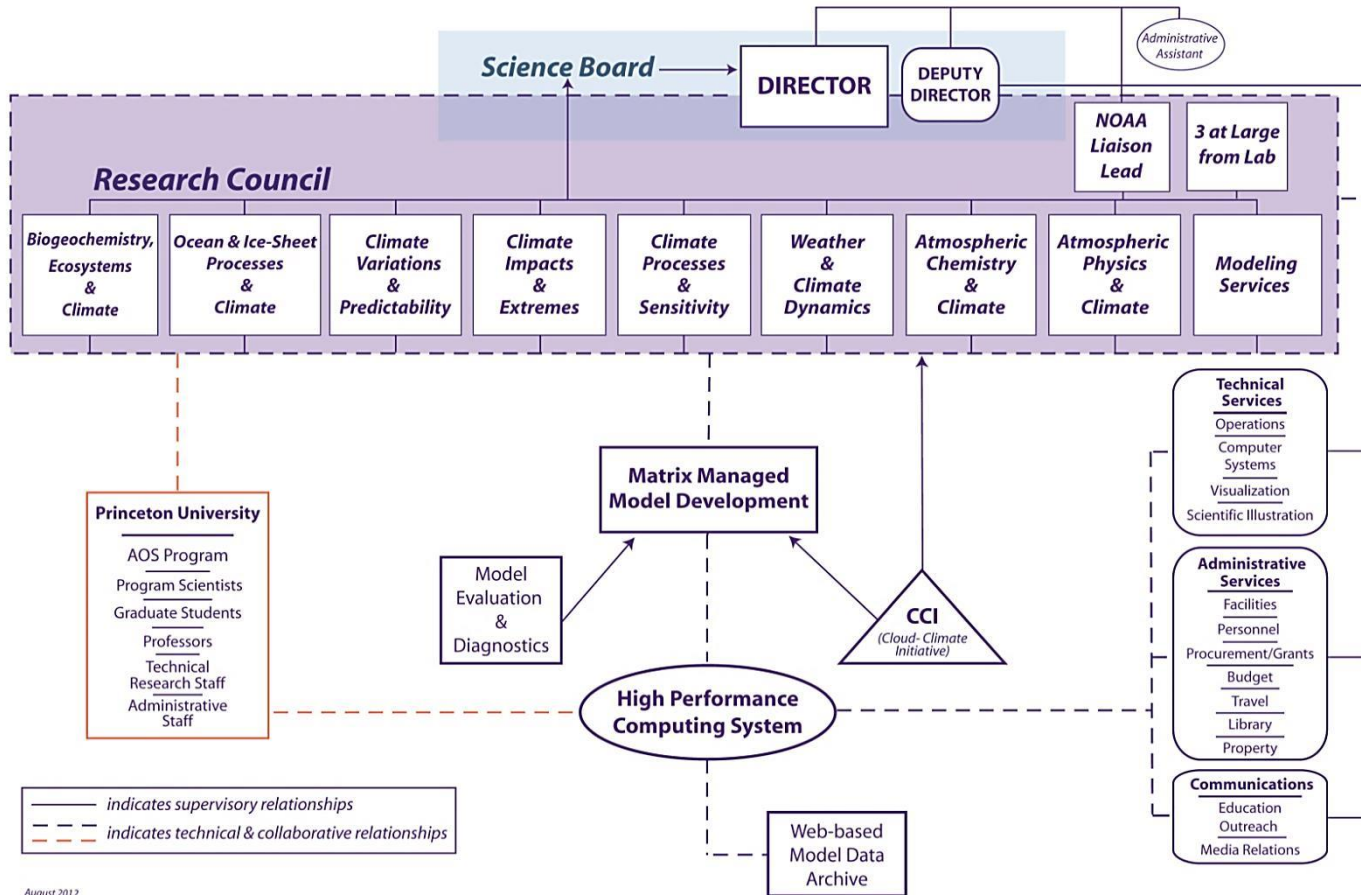
Percent of GFDL Federal Staff Who Are Retirement Eligible



Geophysical Fluid Dynamics Laboratory Organizational Chart



GFDL Organizational Chart



August 2012

