



NOAA/GFDL Auto Proxy Configuration

Background:

The Auto-Proxy configuration is a way for users to access GFDL's internal web pages. This document assumes that the user has a valid account at GFDL and has setup SSH port forwarding for the web proxy. (See <http://www.gfdl.noaa.gov/access/documentation> for more information on setting up SSH with port forwarding.)

In order to use the auto proxy, users will have to have an SSH session open to GFDL while trying to access internal GFDL web pages.

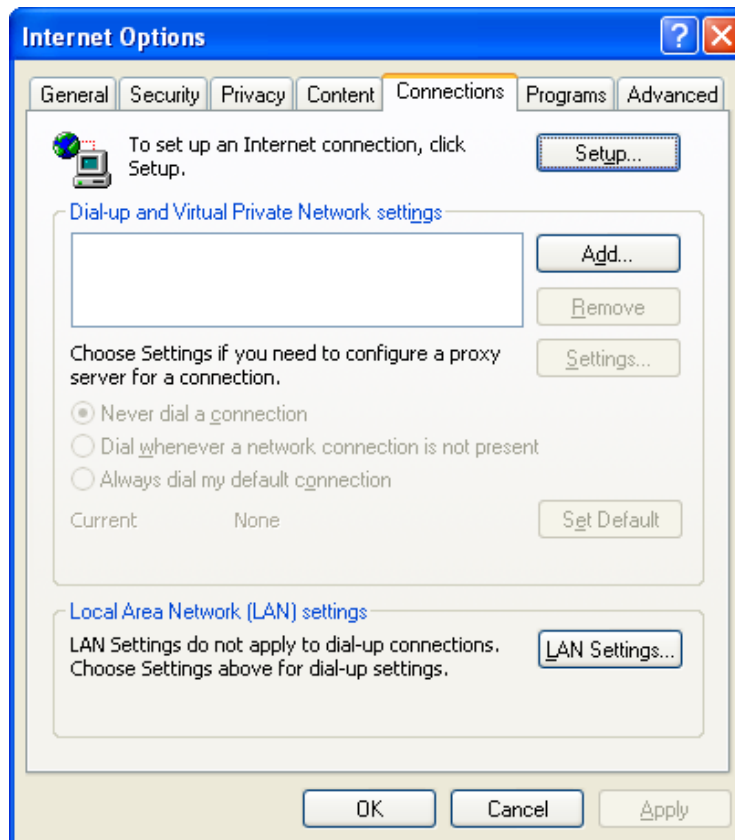
QuickStart:

For those who are experienced with web browsing and port forwarding

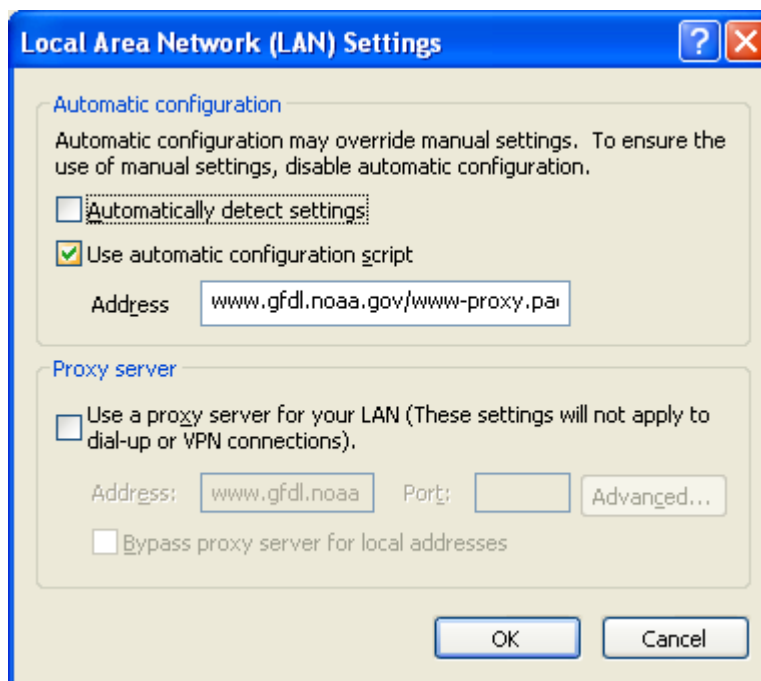
- Login into GFDL via *ssh* with local port forwarding
3128:mayflower:3128
- Setup the auto proxy in your web browser to:
<http://www.gfdl.noaa.gov/www-proxy.pac>

Setting up the Auto Proxy in Microsoft Internet Explorer:

- Open Internet Options from the menu bar. This is a sub-menu that has different locations depending on the version of IE being used.



- Click on the “Lan Settings” button.

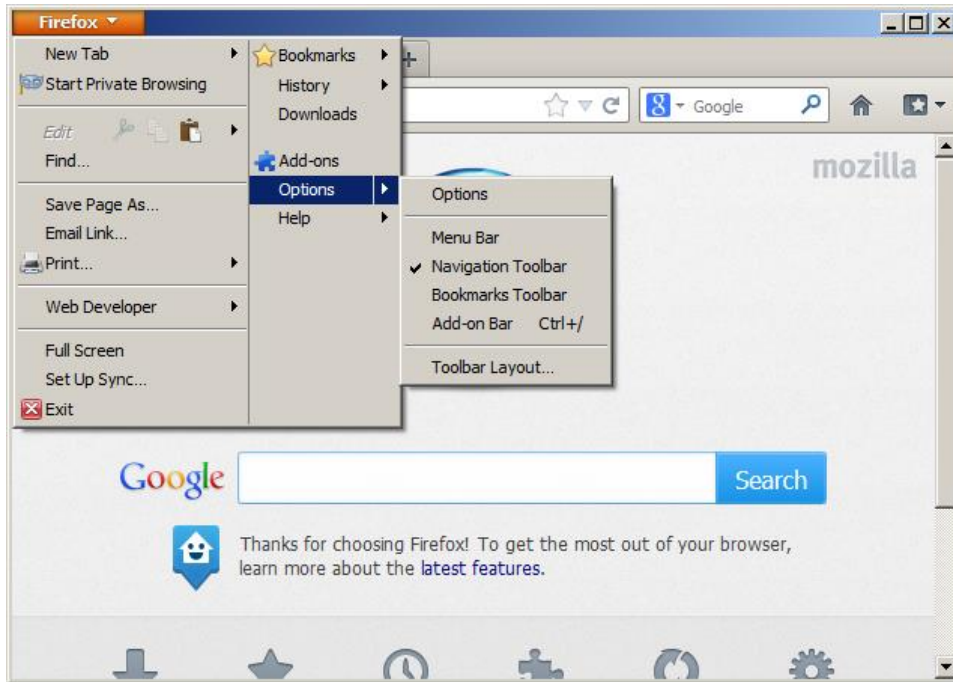


- Enter the address: <http://www.gfdl.noaa.gov/www-proxy.pac>
- Click OK.
- You may need to restart the browser for the proxy setting to take effect.

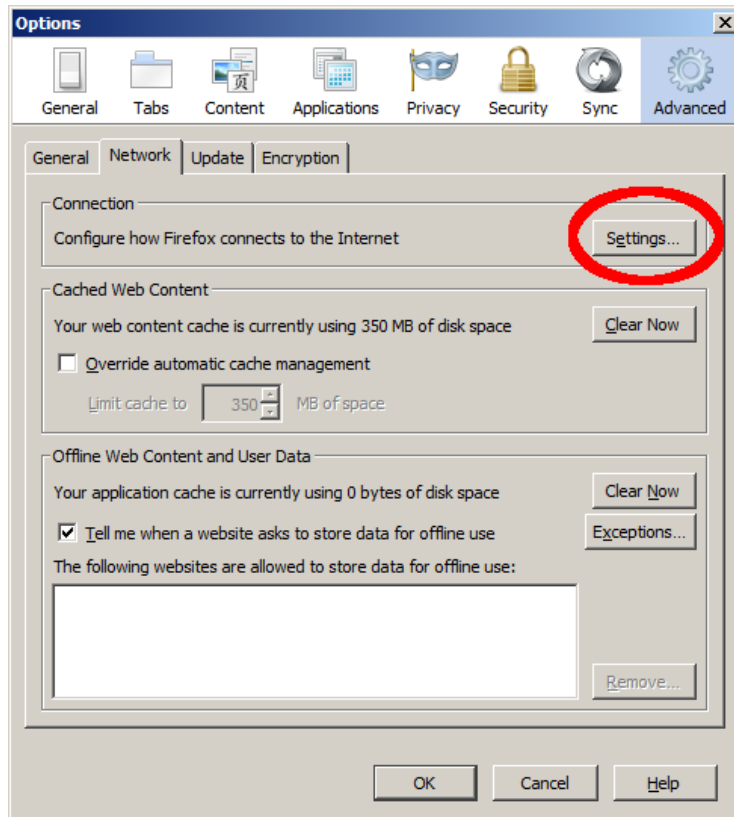
GFDL’s external home page is: <http://www.gfdl.noaa.gov>
GFDL’s internal home page is: <http://cobweb.gfdl.noaa.gov>
GFDL’s internal help desk is: <http://help.gfdl.noaa.gov>

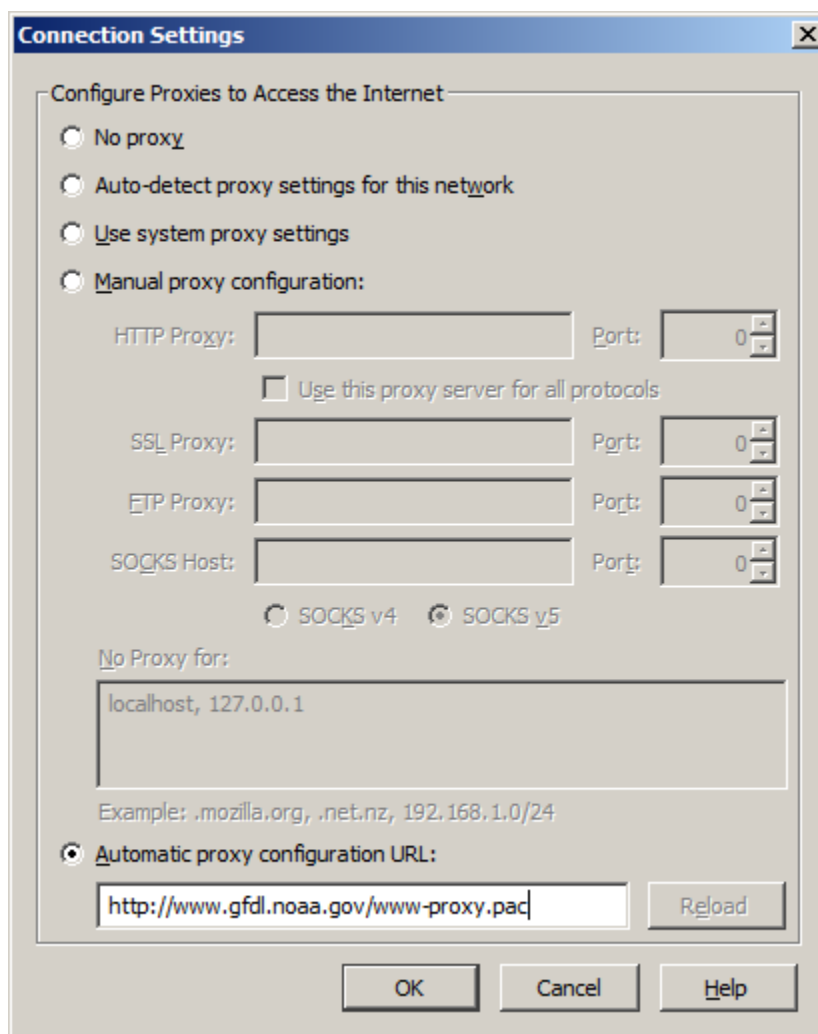
Setting up Auto Proxy in Firefox:

- Click on the orange Firefox icon and go to Options



- Go to the “Advanced” Tab, and then go to the “Network” sub-tab. Click “Settings” under “Connection.”





- Click on the “Automatic proxy configuration URL” button and enter <http://www.gfdl.noaa.gov/www-proxy.pac>
- Click OK.
- You may need to restart the browser for the proxy setting to take effect.